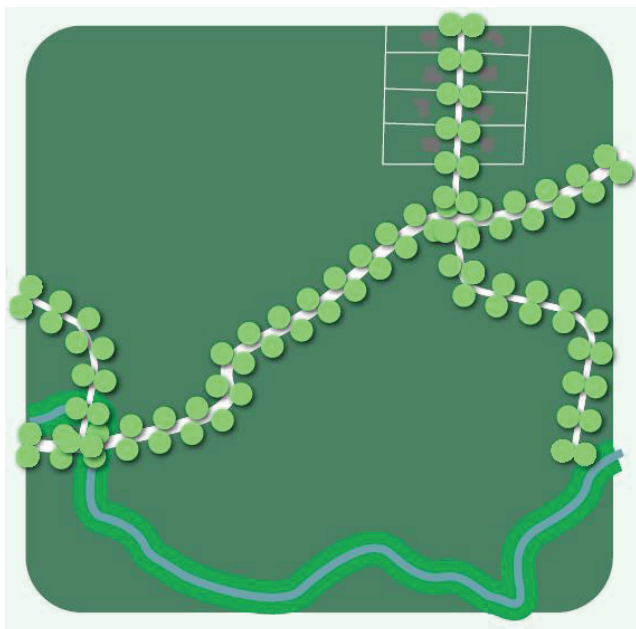


TOOWOOMBA GREEN.IS

TREED AREAS

FACT
SHEET

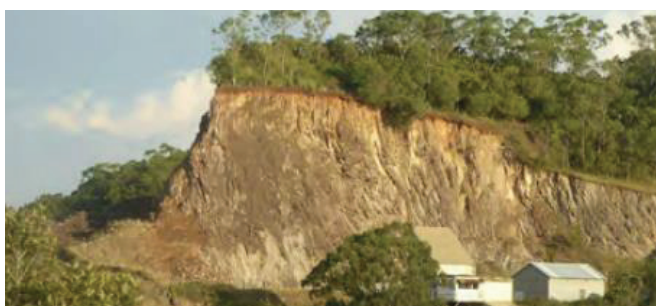
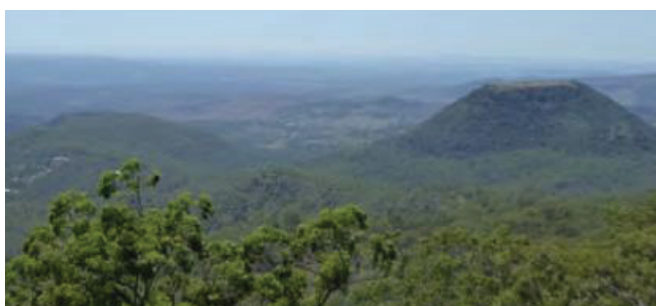


The Treed Areas are emblematic places that contain native species and retain the predominant pre-European settlement floral and faunal structures.

They are relatively undisturbed by farming or urban land uses, and largely present as homogenous areas of tree cover, either as naturalistic remnant vegetation areas or managed forestry parcels.

GREEN INFRASTRUCTURE

Treed Areas are largely consolidated green spaces (natural areas) that allow for ecosystem-scale ecological functions and natural processes.



KEY VALUES OF GREEN INFRASTRUCTURE IN THIS TYPOLOGY INCLUDE:

- Recreational and relaxation benefits
- Encourage the community to be outside and active
- Sense of place and character
- Contact with nature and 'wildness'
- Maintenance of core ecosystem functions
- Core habitat for protected flora and fauna
- Climate regulation
- Soil retention
- Water quality treatment