

TOOWOOMBA GREEN.IS

AGRICULTURAL HILLS AND SLOPES

FACT
SHEET



The Agricultural Hills and Slopes are areas of steeper topography and rolling hills where agriculture (grazing) is the dominant form of land use, although trees and remnant vegetation have a strong presence in the landscape.

Farming in this area is less intensive than in the Agricultural Plains. However, clearing of the Escarpment's slopes has occurred to enable dairy and dryland cattle grazing to occur.

Built form is minimal and related to the agricultural land use.

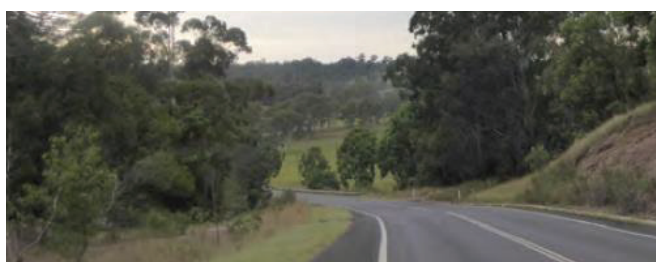
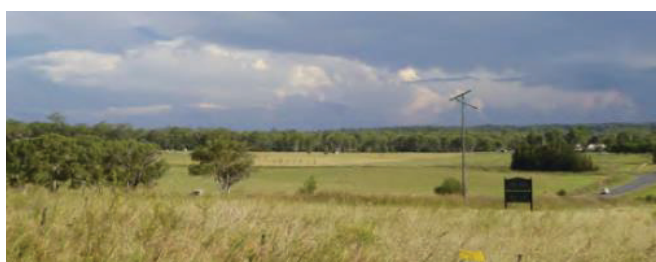
GREEN INFRASTRUCTURE IN THIS TYPOLOGY CONSISTS OF:

Green Spaces

- Productive agricultural land
- Shelter belt stands of remnant trees
- Natural areas

Green Corridors

- Riparian vegetation along creeks and drainage lines
- Roadside vegetation



KEY VALUES OF GREEN INFRASTRUCTURE IN THIS TYPOLOGY INCLUDE:

- Sense of place and character
- Food production
- Habitat for significant flora and fauna
- Corridors to facilitate wildlife movement
- Erosion protection
- Improved water quality