

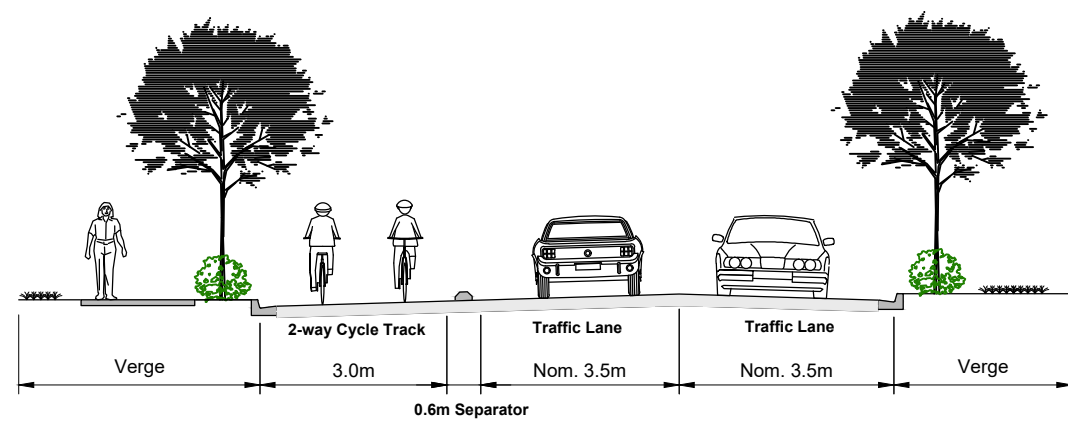
Legend:

Proposed Path Alignment

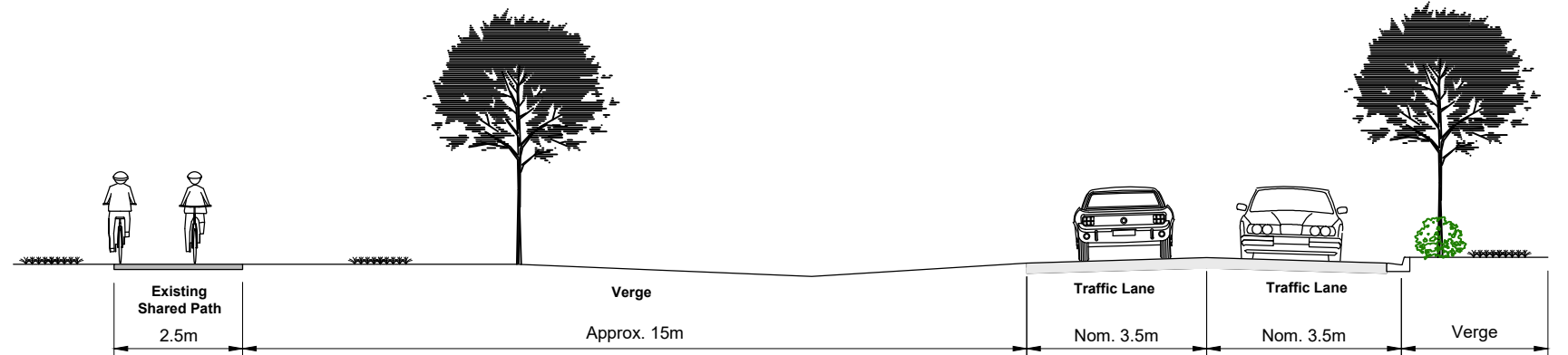


<div><div><div>PRELIMINARY ISSUE ONLY</div><div><div>DATE</div><div>03/02/22</div></div><div><div>ISSUE</div><div>1</div></div></div><table><tr><td>Surveyor</td><td>Designed</td><td>J. WAGNER</td><td colspan="4" rowspan="5"><div><div><div>TOOWOOMBA REGIONAL COUNCIL</div><div>4 Little Street PO Box 3021 Toowoomba Qld 4350</div><div>Ph: 131 TRC (131 872) Fx: 1800 448 882</div></div><div><div><div>TOOWOOMBA REGION</div><div>Rich traditions. Bold ambitions.</div></div></div></div></td><td colspan="4" rowspan="5"><div><div><div>HIGHFIELDS CYCLEWAY</div><div>SECTION 2 &amp; 3</div><div>PREFERRED PATH ALIGNMENT</div><div>OVERALL LAYOUT PLAN</div></div><div><div>Recommended</div><div>Approved</div></div></div></td><td colspan="2"><div>Scale 0 60 120 1:6000</div></td></tr><tr><td>Field Book No.</td><td>Design Check</td><td>R. YOUNG</td><td colspan="2">No. 3 of 73 Dwgs</td><td>Size</td></tr><tr><td>Datum - Horz</td><td>Drafting</td><td>J. WAGNER</td><td colspan="2">PPC: P10708</td><td>A3</td></tr><tr><td>Datum - Vert</td><td>Drafting Check</td><td>R. YOUNG</td><td colspan="2">Drawing No.</td><td>1359-1000</td></tr><tr><td>Upload File</td><td>Project Leader</td><td>R. YOUNG</td><td colspan="2">Issue</td><td>1</td></tr><tr><td colspan="3">Quality Check</td><td colspan="4"></td><td colspan="2"></td></tr></table></div>										Surveyor	Designed	J. WAGNER	<div><div><div>TOOWOOMBA REGIONAL COUNCIL</div><div>4 Little Street PO Box 3021 Toowoomba Qld 4350</div><div>Ph: 131 TRC (131 872) Fx: 1800 448 882</div></div><div><div><div>TOOWOOMBA REGION</div><div>Rich traditions. Bold ambitions.</div></div></div></div>				<div><div><div>HIGHFIELDS CYCLEWAY</div><div>SECTION 2 &amp; 3</div><div>PREFERRED PATH ALIGNMENT</div><div>OVERALL LAYOUT PLAN</div></div><div><div>Recommended</div><div>Approved</div></div></div>				<div>Scale 0 60 120 1:6000</div>		Field Book No.	Design Check	R. YOUNG	No. 3 of 73 Dwgs		Size	Datum - Horz	Drafting	J. WAGNER	PPC: P10708		A3	Datum - Vert	Drafting Check	R. YOUNG	Drawing No.		1359-1000	Upload File	Project Leader	R. YOUNG	Issue		1	Quality Check								
Surveyor	Designed	J. WAGNER	<div><div><div>TOOWOOMBA REGIONAL COUNCIL</div><div>4 Little Street PO Box 3021 Toowoomba Qld 4350</div><div>Ph: 131 TRC (131 872) Fx: 1800 448 882</div></div><div><div><div>TOOWOOMBA REGION</div><div>Rich traditions. Bold ambitions.</div></div></div></div>				<div><div><div>HIGHFIELDS CYCLEWAY</div><div>SECTION 2 &amp; 3</div><div>PREFERRED PATH ALIGNMENT</div><div>OVERALL LAYOUT PLAN</div></div><div><div>Recommended</div><div>Approved</div></div></div>				<div>Scale 0 60 120 1:6000</div>																																												
Field Book No.	Design Check	R. YOUNG									No. 3 of 73 Dwgs										Size																																		
Datum - Horz	Drafting	J. WAGNER									PPC: P10708										A3																																		
Datum - Vert	Drafting Check	R. YOUNG									Drawing No.										1359-1000																																		
Upload File	Project Leader	R. YOUNG									Issue		1																																										
Quality Check																																																							





Typical On-Road 2-way Cycle Track Cross Section



Typical Existing 2.5m Shared Path Cross Section

PRELIMINARY ISSUE ONLY									
DATE	03/02/22								
ISSUE	1								

Surveyor	
Field Book No.	
Datum - Horz	
Datum - Vert	
Upload File	

Designed	J. WAGNER
Design Check	R. YOUNG
Drafting	J. WAGNER
Drafting Check	R. YOUNG
Project Leader	R. YOUNG
Quality Check	



TOOWOOMBA  
REGIONAL COUNCIL  
4 Little Street  
PO Box 3021  
Toowoomba  
Qld 4350  
Ph: 131 TRC (131 872)  
Fx: 1800 448 882

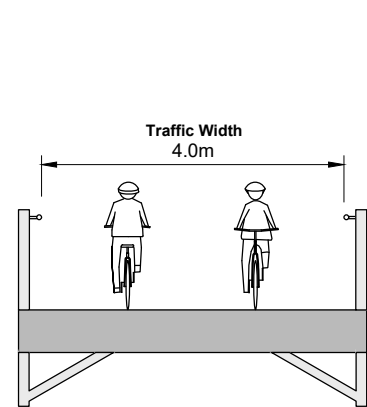
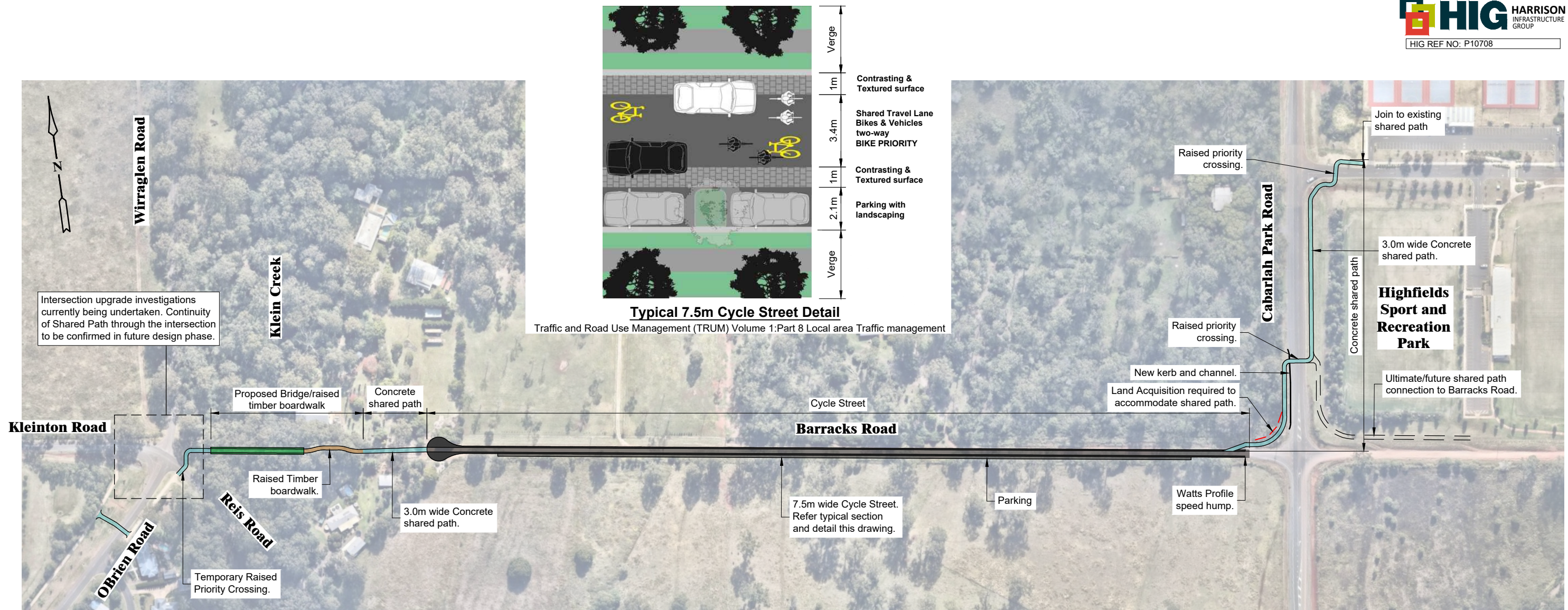


Recommended	Approved
-------------	----------

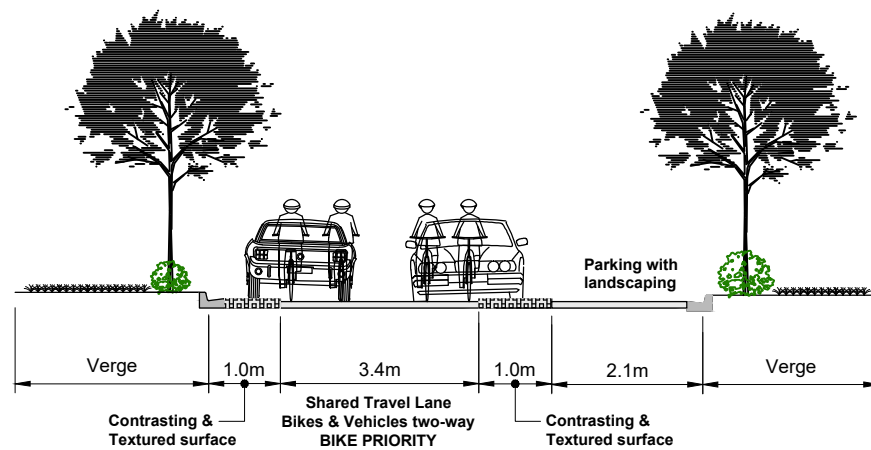
**HIGHFIELDS CYCLEWAY  
SECTION 2  
PREFERRED PATH ALIGNMENT  
LAYOUT PLAN - SHEET 1 OF 2**

Scale	0 30 60 1:3000
No. 4 of 73 Dwgs	Size <b>A3</b>
PPC: P10708	Drawing No. <b>1359-1001</b>
	<b>Issue 1</b>



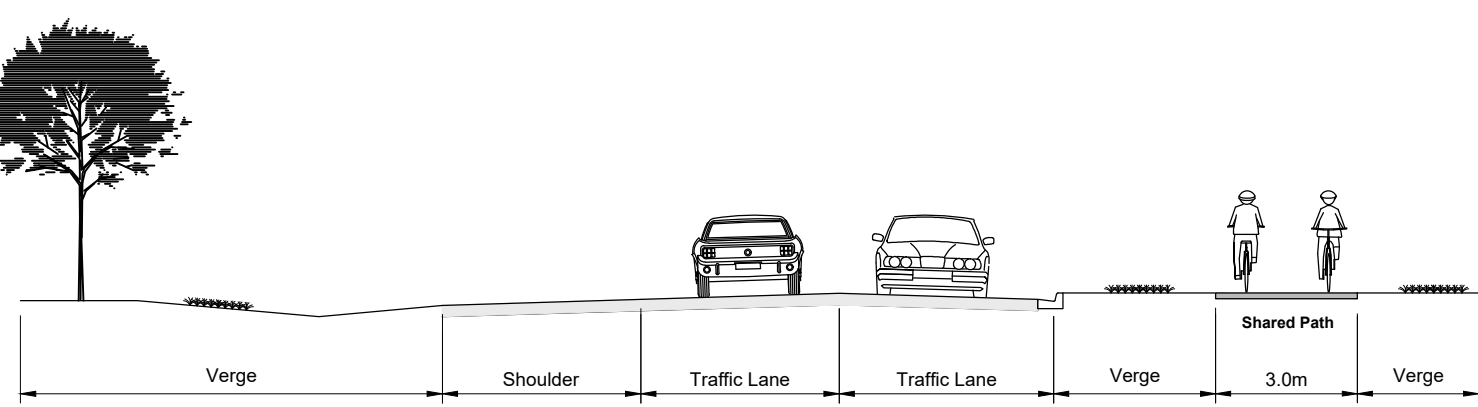


**Typical Bridge Cross Section**



**Typical 7.5m kerb to kerb Cycle Street Cross Section**

Traffic and Road Use Management (TRUM) Volume 1:Part 8 Local area Traffic management



**Typical 3.0m Shared Path Cross Section**

<div> <div>PRELIMINARY ISSUE ONLY</div> <div> <div>DATE</div> <div>03/02/22</div> </div> <div> <div>ISSUE</div> <div>1</div> </div> </div>										<div>Surveyor</div> <div>Field Book No.</div> <div>Datum - Horz</div> <div>Datum - Vert</div> <div>Upload File</div>	<div>Designed</div> <div>Design Check</div> <div>Drafting</div> <div>Drafting Check</div> <div>Project Leader</div> <div>Quality Check</div>	<div>J. WAGNER</div> <div>R. YOUNG</div> <div>J. WAGNER</div> <div>R. YOUNG</div> <div>R. YOUNG</div> <div>R. YOUNG</div>	<div> </div> <div> <b>TOOWOOMBA REGIONAL COUNCIL</b>            4 Little Street            PO Box 3021            Toowoomba Qld 4350            Ph: 131 TRC (131 872)            Fx: 1800 448 882         </div> <div>   <b>TOOWOOMBA REGION</b>            Rich traditions. Bold ambitions.         </div>	<div> <div>HIGHFIELDS CYCLEWAY</div> <div>SECTION 3</div> <div>PREFERRED PATH ALIGNMENT</div> <div>LAYOUT PLAN - SHEET 2 OF 2</div> </div>				<div>Scale 0 30 60</div> <div>1:3000</div> <div>No. 5 of 73 Dwgs</div> <div>PPC: P10708</div> <div>Drawing No.</div> <div>1359-1002</div>	<div>Recommended</div> <div>Approved</div>	<div>Size</div> <div>A3</div> <div>Issue</div> <div>1</div>
--------------------------------------------------------------------------------------------------------------------------------------------	--	--	--	--	--	--	--	--	--	----------------------------------------------------------------------------------------------------------------------	----------------------------------------------------------------------------------------------------------------------------------------------	---------------------------------------------------------------------------------------------------------------------------	-----------------------------------------------------------------------------------------------------------------------------------------------------------------------------------------------------------------------------------------------------------------------------------------------------------------------------------------	--------------------------------------------------------------------------------------------------------------------------------------------	--	--	--	-------------------------------------------------------------------------------------------------------------------------------------------	--------------------------------------------	-------------------------------------------------------------