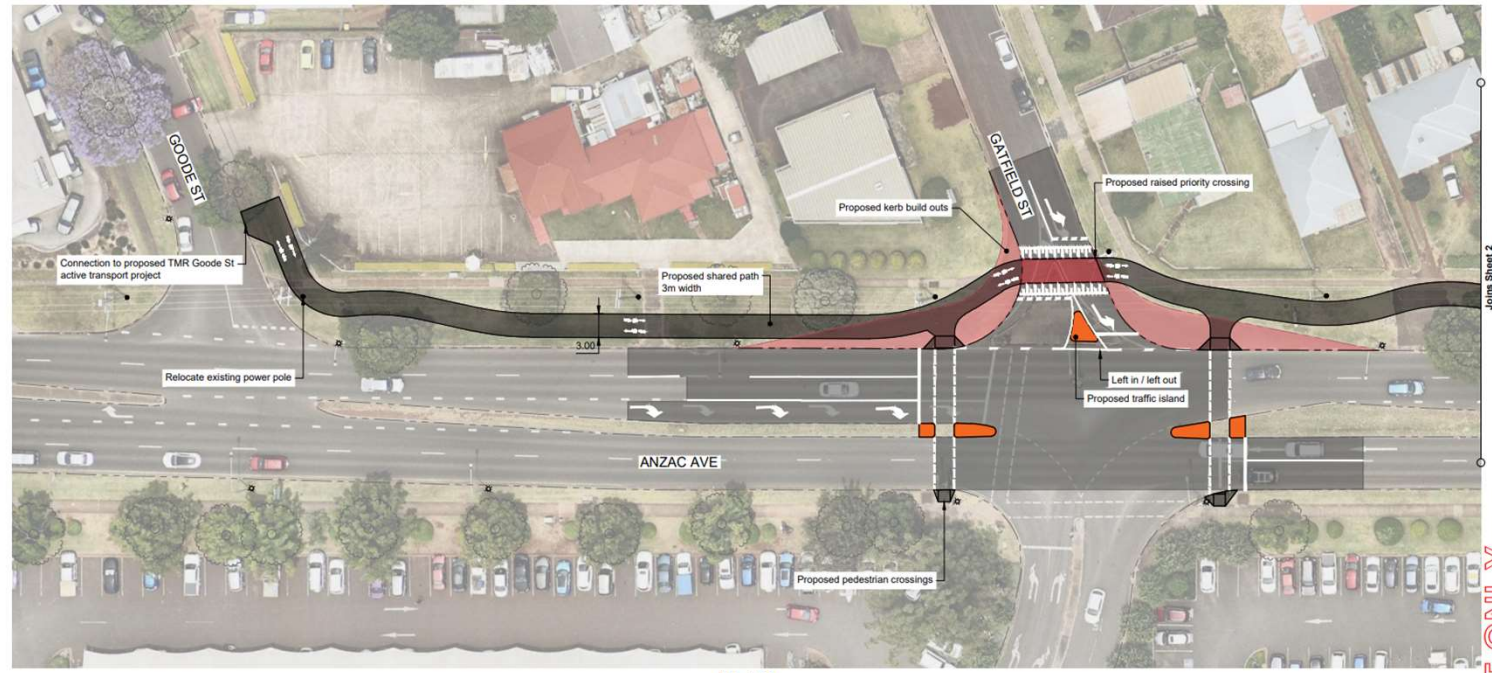


Anzac Avenue  
Shared Path 1/13



**PLAN**  
Scale - 1:500

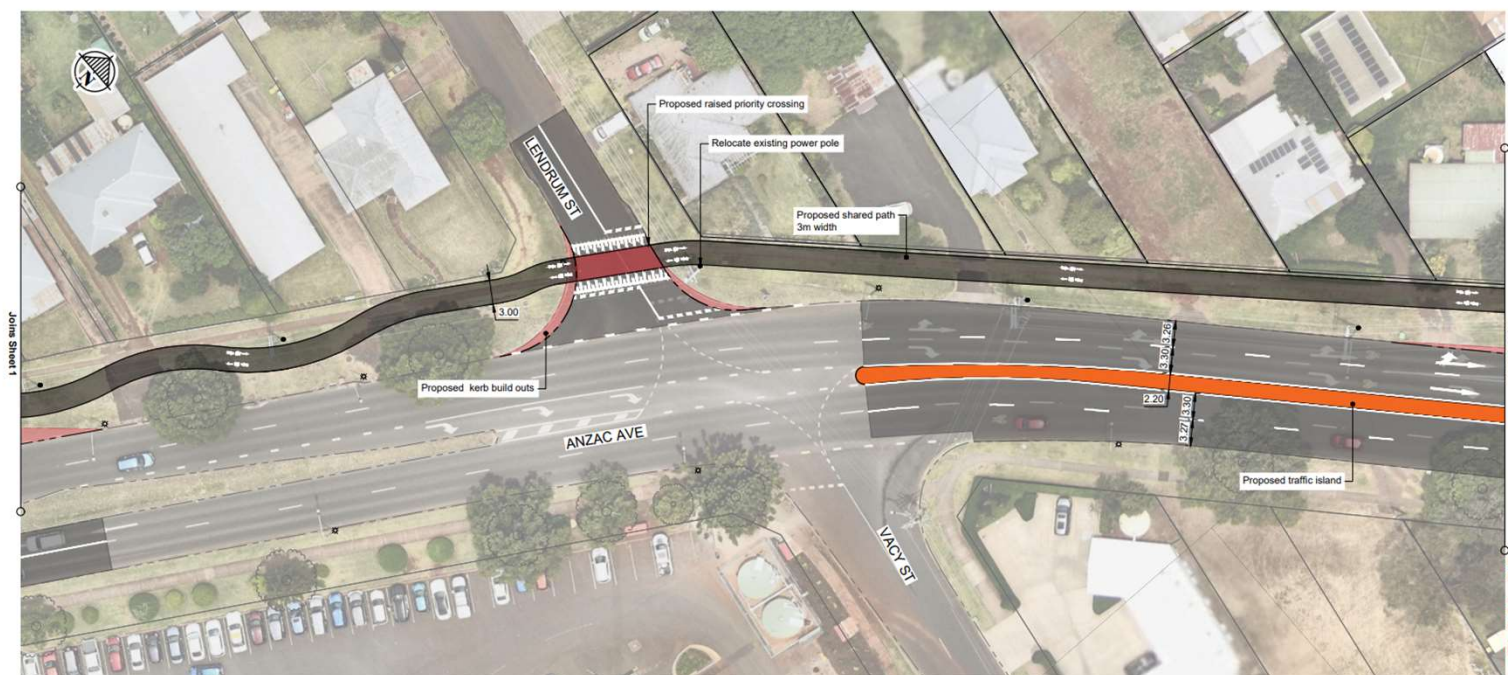
002 10

CONCEPT ONLY

C:\32552\2\2\man376\22414 - Harris Street Boyds Reuse Planning\_190502.DESIGN23.DWG C:\D\GSR\_1231125-00.dwg Plotted: 31-Oct-25 4:01 pm by Jean-Alex

		<p align="center"><b>SKETCH</b></p> <p>The sketch shown on this document may have been compiled from varied sources &amp; has NOT been checked for its correctness or it's suitability for use on this or any other project. No responsibility can be accepted for any concepts, ideas, quantities or information shown on this document.</p>		<p>Project</p> <p align="center"><b>TOOWOOMBA REGIONAL COUNCIL</b>  <b>GLENVALE TO CBD</b>  <b>ACTIVE TRANSPORT CORRIDOR INVESTIGATION</b></p>		
FOR INFORMATION		 <p align="center"><b>TOOWOOMBA REGION</b></p> <p align="center">Toowoomba Regional Council   131 872  info@tr.qld.gov.au   www.tr.qld.gov.au</p>		<p>Title</p> <p align="center"><b>GENERAL ARRANGEMENT - SHEET 1 OF 13</b></p>		<p>Sketch No.</p> <p align="center"><b>1231122-SK-002</b></p>
Sketch History		Date				

## Anzac Avenue Shared Path 2/13



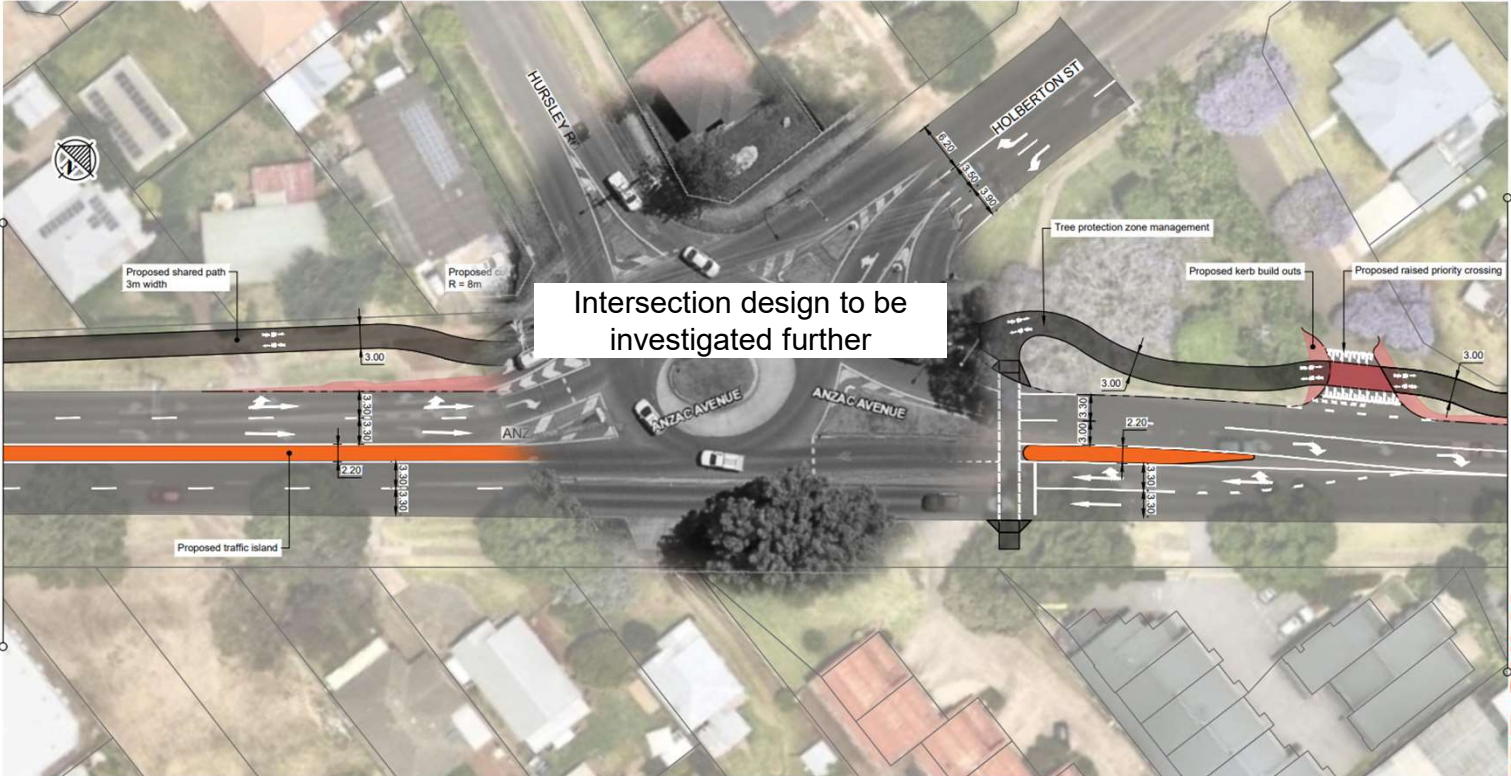
**PLAN**  
Scale - 1:500

CONCEPT ONLY

		<p><b>SKETCH</b></p> <p>The sketch shown on this document may have been compiled from varied sources &amp; has NOT been checked for its correctness or it's suitability for use on this or any other project. No responsibility can be accepted for any concepts, ideas, quantities or information shown on this document.</p>	 <p>Toowoomba Regional Council   131 872 info@tr.qld.gov.au   www.tr.qld.gov.au</p>	<p>Project</p> <p><b>TOOWOOMBA REGIONAL COUNCIL GLENVALE TO CBD ACTIVE TRANSPORT CORRIDOR INVESTIGATION</b></p>	<p>0 0 50</p> <p>Scale 1:500 (m)</p> <p>Design ID -</p>		
FOR INFORMATION						<p>Title</p> <p><b>GENERAL ARRANGEMENT - SHEET 2 OF 13</b></p>	<p>Sketch No.</p> <p><b>1231122-SK-003</b></p>
Sketch History	Date						



Anzac Avenue/  
Holberton Street  
Shared Path 3/13



**PLAN**  
Scale - 1:500

10  
-004

		<p align="center"><b>SKETCH</b></p> <p>The sketch shown on this document may have been compiled from varied sources &amp; has NOT been checked for its correctness or its suitability for use on this or any other project. No responsibility can be accepted for any concepts, ideas, quantities or information shown on this document.</p>		<p>Project</p> <p align="center"><b>TOOWOOMBA REGIONAL COUNCIL GLENVALE TO CBD ACTIVE TRANSPORT CORRIDOR INVESTIGATION</b></p> <p align="right">               Scale 1:800 (m)              Design ID -         </p>	
<b>FOR INFORMATION</b>				<p>Title</p> <p align="center"><b>GENERAL ARRANGEMENT - SHEET 3 OF 13</b></p>	
Sketch History		Date		<p>Sketch No.</p> <p align="right"><b>123112-SK-004</b></p>	

# Anzac Avenue/ Herries Street Shared Path 4/13



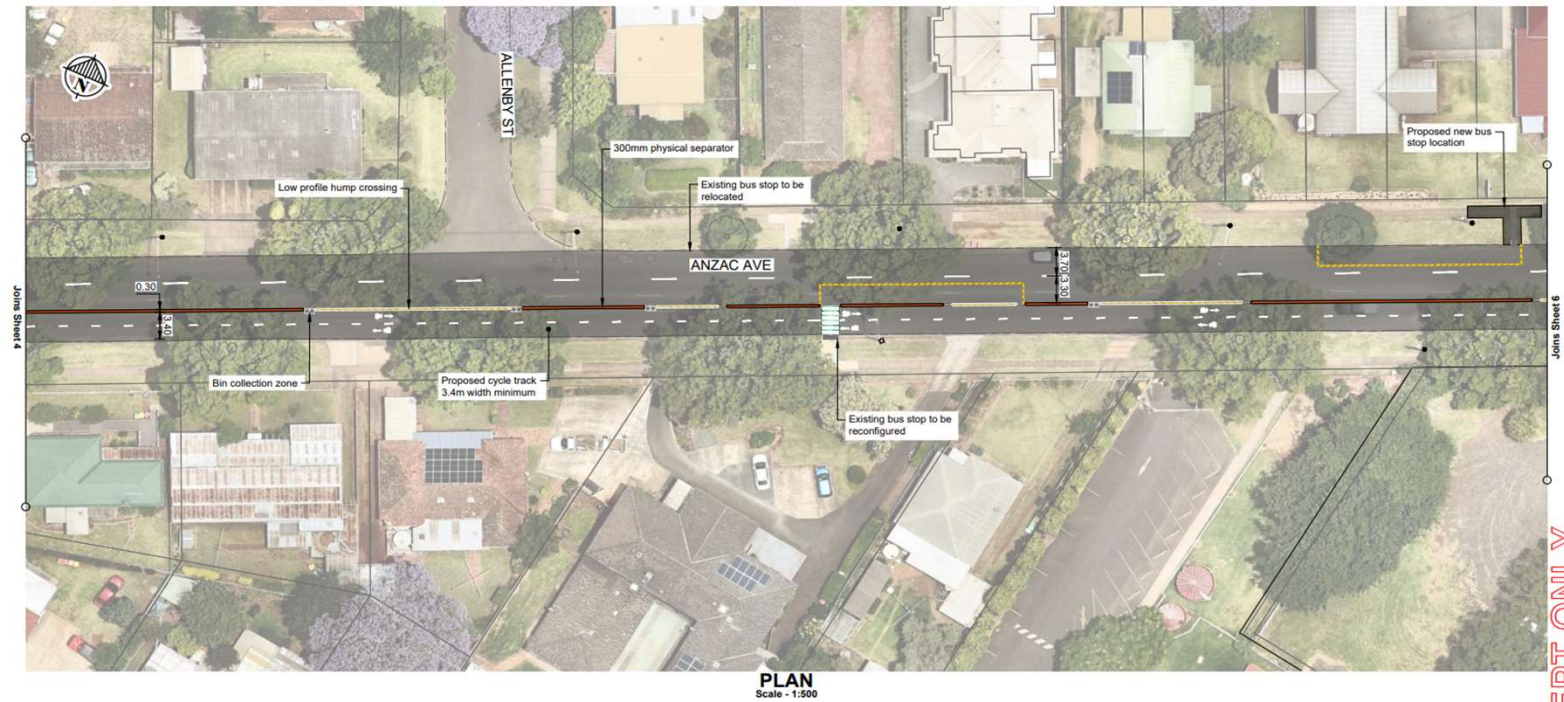
**PLAN**  
Scale - 1:500

CONCEPT ONLY

		<p><b>SKETCH</b></p> <p>The sketch shown on this document may have been compiled from varied sources &amp; has NOT been checked for its correctness or it's suitability for use on this or any other project. No responsibility can be accepted for any concepts, ideas, quantities or information shown on this document.</p>	<p> <b>TOOWOOMBA REGION</b></p> <p>Toowoomba Regional Council   131 872 info@tr.qld.gov.au   www.tr.qld.gov.au</p>	<p>Project</p> <p><b>TOOWOOMBA REGIONAL COUNCIL GLENVALE TO CBD ACTIVE TRANSPORT CORRIDOR INVESTIGATION</b></p>	<p></p> <p>Scale 1:500 (m)</p> <p>Design ID -</p>
FOR INFORMATION	Sketch History				Date



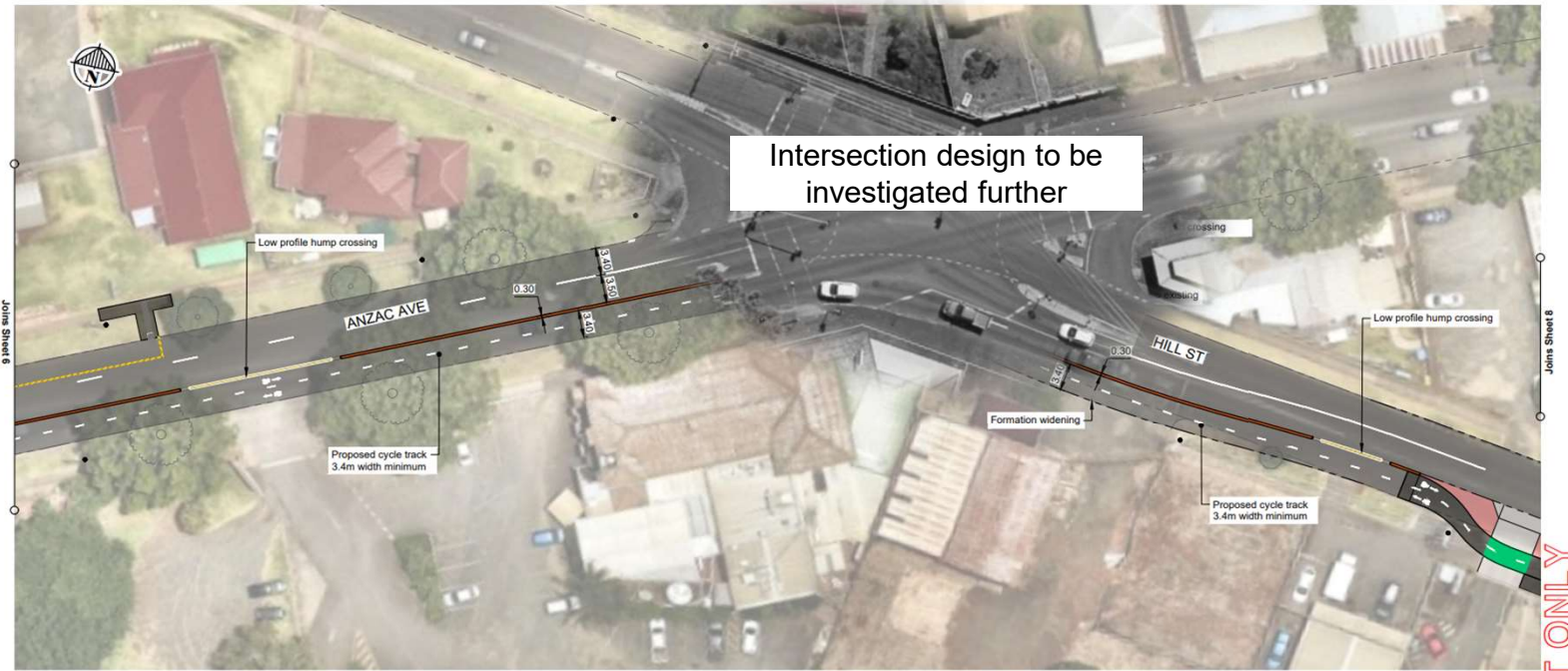
## Anzac Avenue Cycle track 5/13



CONCEPT ONLY

<p>FOR INFORMATION</p> <p>Sketch History</p> <p>Date</p>		<p><b>SKETCH</b></p> <p>The sketch shown on this document may have been compiled from varied sources &amp; has NOT been checked for its correctness or it's suitability for use on this or any other project. No responsibility can be accepted for any concepts, ideas, quantities or information shown on this document.</p>	<p><b>TOOWOOMBA REGION</b></p> <p>Toowoomba Regional Council   131 872 info@tr.qld.gov.au   www.tr.qld.gov.au</p>	<p>Project</p> <p><b>TOOWOOMBA REGIONAL COUNCIL GLENVALE TO CBD ACTIVE TRANSPORT CORRIDOR INVESTIGATION</b></p> <p>Title</p> <p><b>GENERAL ARRANGEMENT - SHEET 5 OF 13</b></p>	<p>Scale</p> <p>1:500 (m)</p> <p>Design ID</p> <p>Sketch No.</p> <p><b>1231122-SK-006</b></p>
--	--	--	---	--	---

Anzac Avenue/  
Hill Street  
Cycle track 6/13



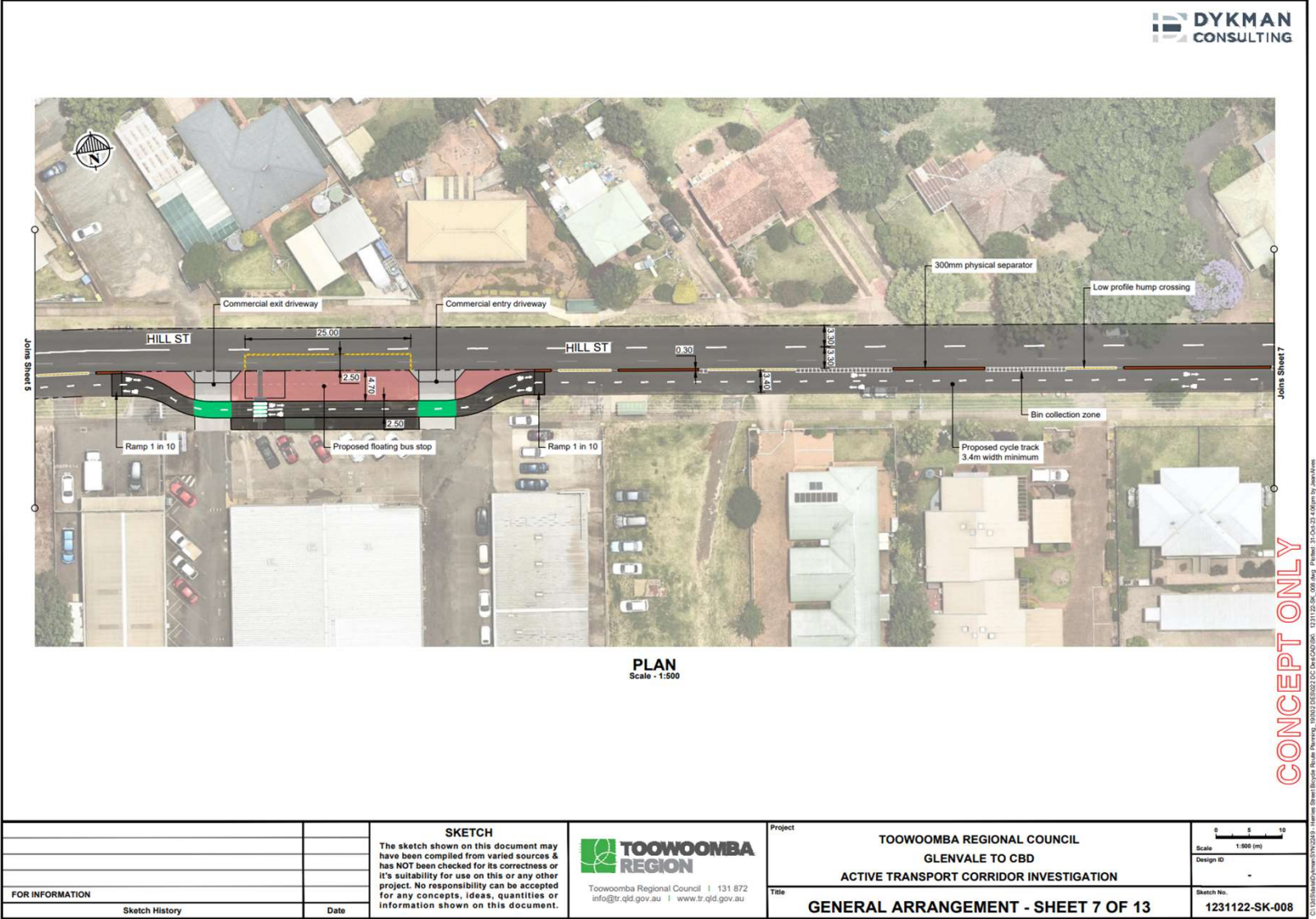
**PLAN**  
Scale - 1:500

		<div>SKETCH</div> <div>The sketch shown on this document may have been compiled from varied sources &amp; has NOT been checked for its correctness or it's suitability for use on this or any other project. No responsibility can be accepted for any concepts, ideas, quantities or information shown on this document.</div>	<div><div>TOOWOOMBA REGION</div><div>Toowoomba Regional Council   131 872 info@tr.qld.gov.au   www.tr.qld.gov.au</div></div>	<div>Project</div> <div>TOOWOOMBA REGIONAL COUNCIL GLENVALE TO CBD ACTIVE TRANSPORT CORRIDOR INVESTIGATION</div>		<div><div>0 5 10</div><div>Scale 1:500 (m)</div><div>Design ID -</div></div>
FOR INFORMATION				<div>Title</div> <div>GENERAL ARRANGEMENT - SHEET 6 OF 13</div>		<div>Sketch No.</div> <div>1231122-SK-007</div>
Sketch History		Date				

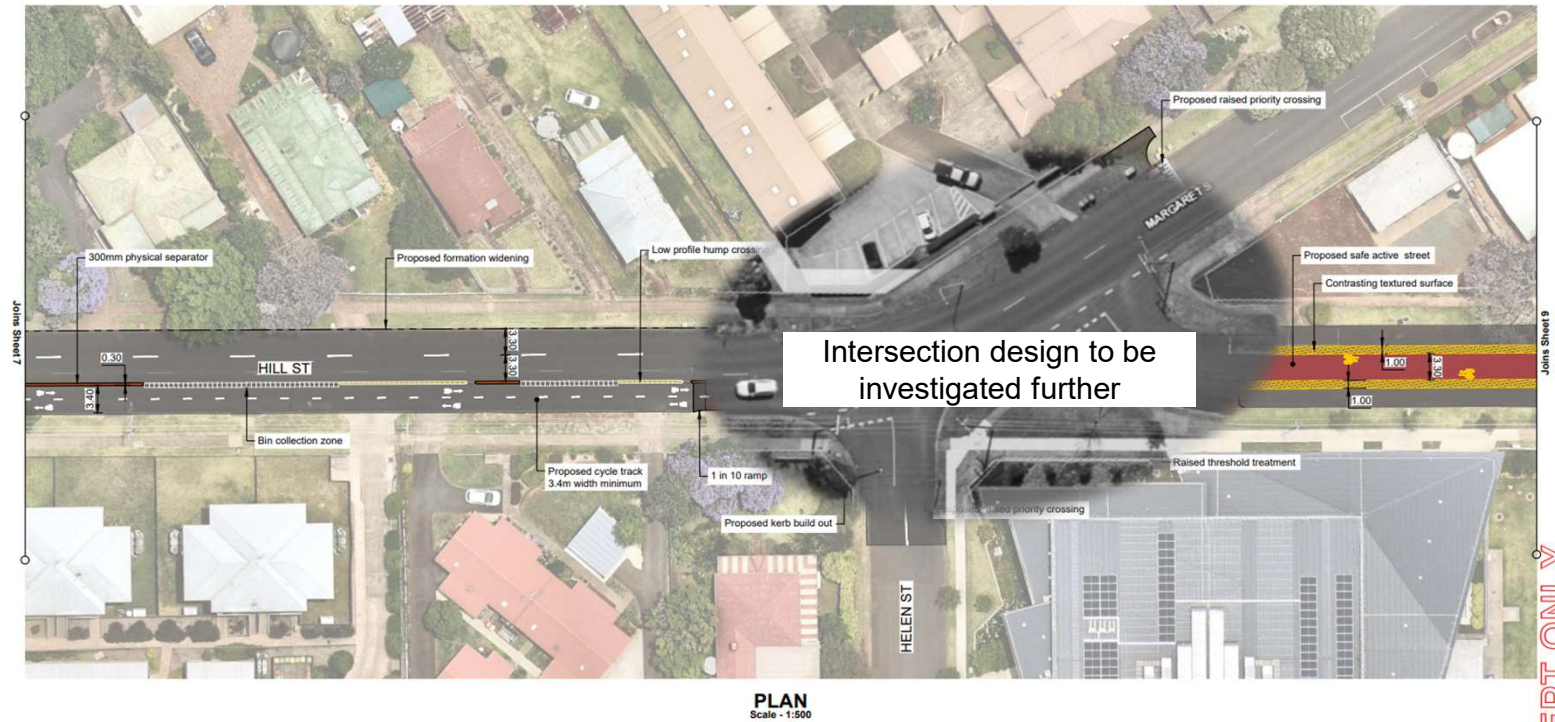
CONCEPT ONLY



# Hill Street Cycle track 7/13



# Hill Street/Helen St Cycle track/ cycle street 8/13

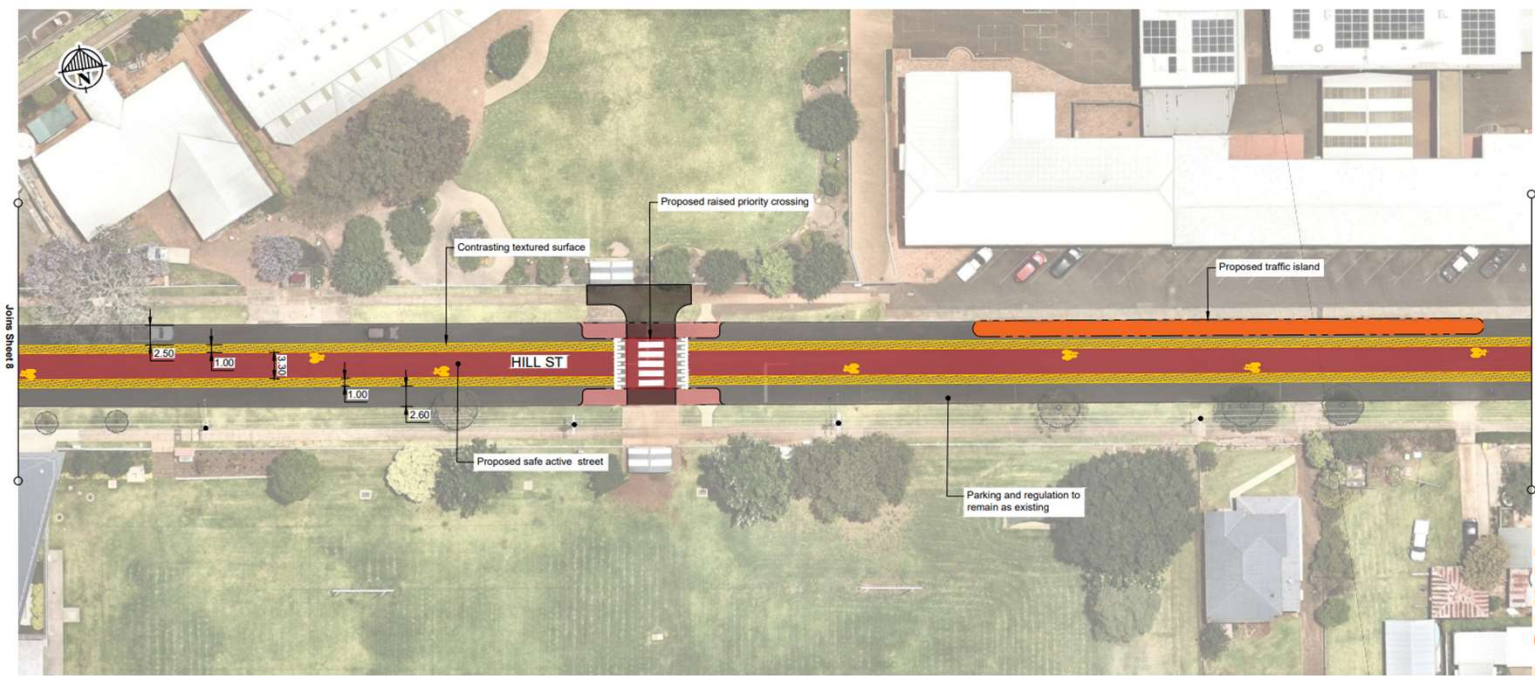


CONCEPT ONLY

<p>FOR INFORMATION</p> <p>Sketch History</p> <p>Date</p>		<p><b>SKETCH</b></p> <p>The sketch shown on this document may have been compiled from varied sources &amp; has NOT been checked for its correctness or its suitability for use on this or any other project. No responsibility can be accepted for any concepts, ideas, quantities or information shown on this document.</p>	<p><b>TOOWOOMBA REGION</b></p> <p>Toowoomba Regional Council   131 872 info@tr.qld.gov.au   www.tr.qld.gov.au</p>	<p>Project</p> <p><b>TOOWOOMBA REGIONAL COUNCIL GLENVALE TO CBD ACTIVE TRANSPORT CORRIDOR INVESTIGATION</b></p> <p>Title</p> <p><b>GENERAL ARRANGEMENT - SHEET 8 OF 13</b></p>	<p>Scale</p> <p>1:500 (m)</p> <p>Design ID</p> <p>Sketch No.</p> <p><b>1231122-SK-009</b></p>
--	--	---	---	--	---



# Hill Street Cycle street 9/13

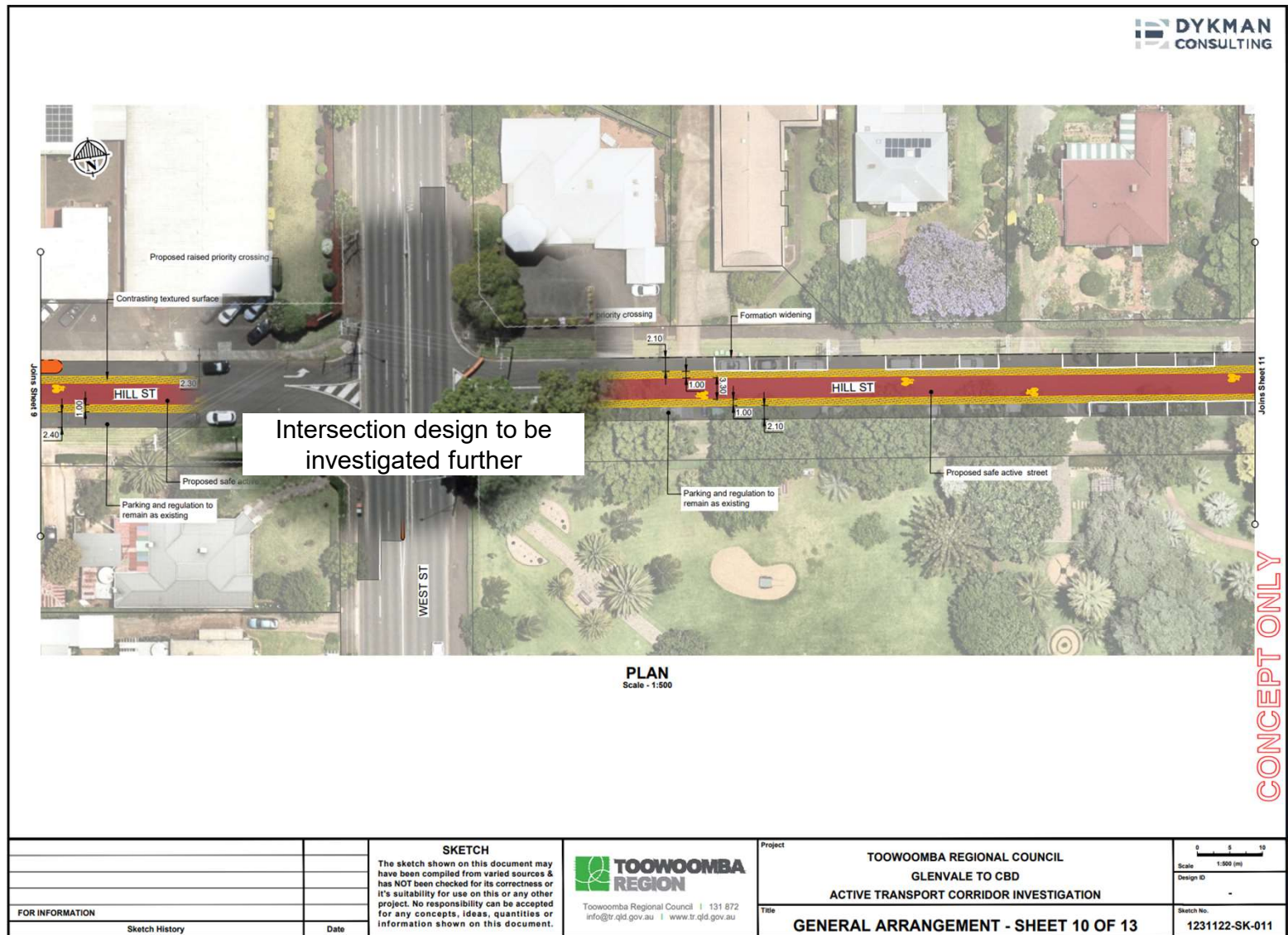


**PLAN**  
Scale - 1:500

**CONCEPT ONLY**

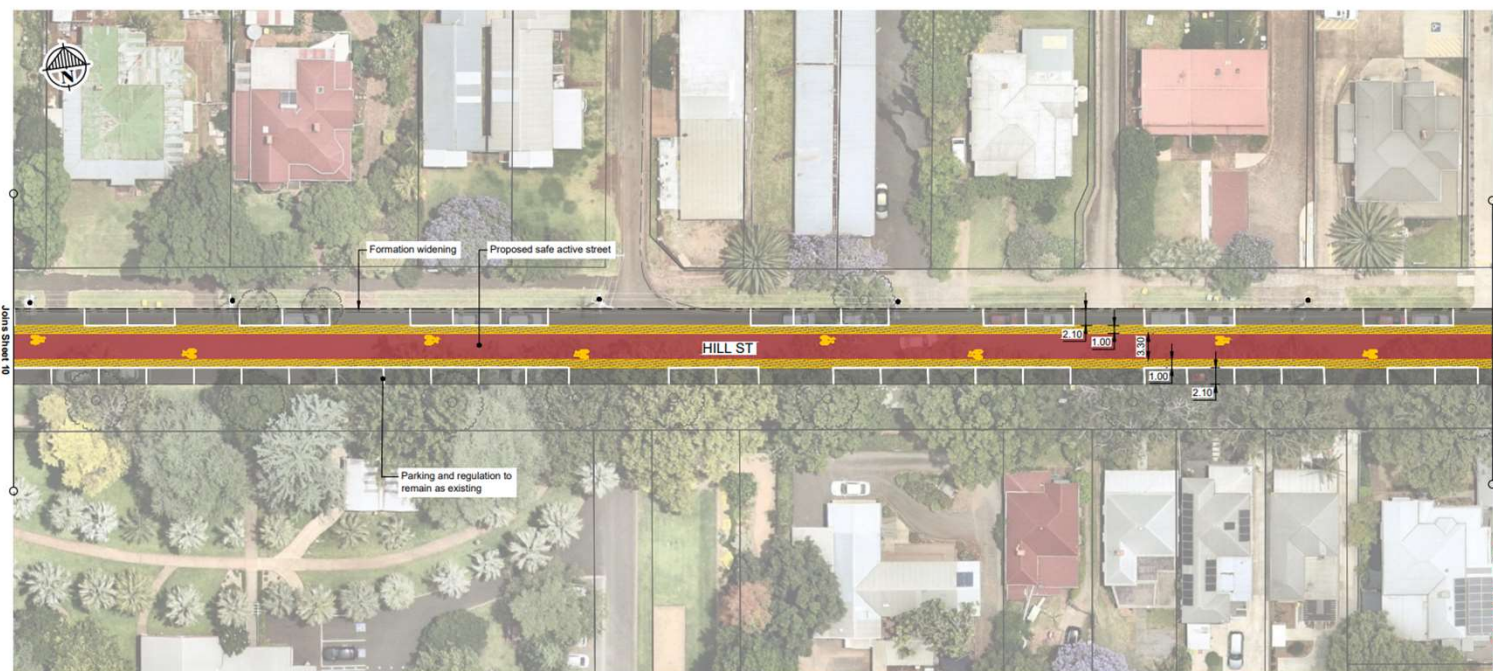
		<p><b>SKETCH</b></p> <p>The sketch shown on this document may have been compiled from varied sources &amp; has NOT been checked for its correctness or its suitability for use on this or any other project. No responsibility can be accepted for any concepts, ideas, quantities or information shown on this document.</p>	<p><b>TOOWOOMBA REGION</b></p> <p>Toowoomba Regional Council   131 872 info@tr.qld.gov.au   www.tr.qld.gov.au</p>	<p>Project <b>TOOWOOMBA REGIONAL COUNCIL GLENVALE TO CBD ACTIVE TRANSPORT CORRIDOR INVESTIGATION</b></p> <p>Title <b>GENERAL ARRANGEMENT - SHEET 9 OF 13</b></p>	<p>Scale 1:500 (m)</p> <p>Design ID -</p> <p>Sketch No. <b>1231122-SK-010</b></p>
FOR INFORMATION					
Sketch History	Date				

# Hill Street/West St Cycle street 10/13





# Hill Street Cycle street 11/13



**PLAN**  
Scale - 1:500

CONCEPT ONLY

		<p><b>SKETCH</b></p> <p>The sketch shown on this document may have been compiled from varied sources &amp; has NOT been checked for its correctness or its suitability for use on this or any other project. No responsibility can be accepted for any concepts, ideas, quantities or information shown on this document.</p>	 <p>Toowoomba Regional Council   131 872 info@tr.qld.gov.au   www.tr.qld.gov.au</p>	<p>Project</p> <p><b>TOOWOOMBA REGIONAL COUNCIL GLENVALE TO CBD ACTIVE TRANSPORT CORRIDOR INVESTIGATION</b></p>		 <p>Scale 1:500 (m)</p> <p>Design ID -</p>
<p>FOR INFORMATION</p>				<p>Title</p> <p><b>GENERAL ARRANGEMENT - SHEET 11 OF 13</b></p>		<p>Sketch No.</p> <p><b>1231122-SK-012</b></p>
<p>Sketch History</p>	<p>Date</p>					

Hill St/Clifford St  
Cycle track 12/13



**PLAN**  
Scale - 1:500

Intersection design to be investigated further

Proposed cycle track  
3m width minimum

- Parking and regulation to remain as existing

- Proposed safe active street

Proposed 17

Joins Sheet 1

[illegible]

CONCEPT ONLY

		<p align="center"><b>SKETCH</b></p> <p>The sketch shown on this document may have been compiled from varied sources &amp; has NOT been checked for its correctness or its suitability for use on this or any other project. No responsibility can be accepted for any concepts, ideas, quantities or information shown on this document.</p>	 <p align="center"> <b>TOOWOOMBA REGION</b> </p> <p align="center">             Toowoomba Regional Council   131 872              info@tr.qld.gov.au   www.tr.qld.gov.au         </p>	<p>Project</p> <p align="center"> <b>TOOWOOMBA REGIONAL COUNCIL GLENVALE TO CBD ACTIVE TRANSPORT CORRIDOR INVESTIGATION</b> </p> <p>Scale 1:900 (m)</p> <p align="center">-</p>	<p align="right">0 5 10</p>
<b>FOR INFORMATION</b>				<p>Title</p> <p align="center"> <b>GENERAL ARRANGEMENT - SHEET 12 OF 13</b> </p>	<p>Sketch No.</p> <p align="right">1231122-SK-013</p>
	Sketch History	Date			



# Hill Street/Dent St Cycle track 13/13



**PLAN**  
Scale - 1:500

CONCEPT ONLY

				<p><b>SKETCH</b></p> <p>The sketch shown on this document may have been compiled from varied sources &amp; has NOT been checked for its correctness or it's suitability for use on this or any other project. No responsibility can be accepted for any concepts, ideas, quantities or information shown on this document.</p>		<p> <b>TOOWOOMBA REGION</b></p> <p>Toowoomba Regional Council   131 872 info@tr.qld.gov.au   www.tr.qld.gov.au</p>		<p>Project</p> <p><b>TOOWOOMBA REGIONAL COUNCIL GLENVALE TO CBD ACTIVE TRANSPORT CORRIDOR INVESTIGATION</b></p>		<p> Scale 1:500 (m) Design ID -</p>	
<p>FOR INFORMATION</p>								<p>Title</p> <p><b>GENERAL ARRANGEMENT - SHEET 13 OF 13</b></p>		<p>Sketch No. <b>1231122-SK-014</b></p>	
<p>Sketch History</p>		<p>Date</p>									